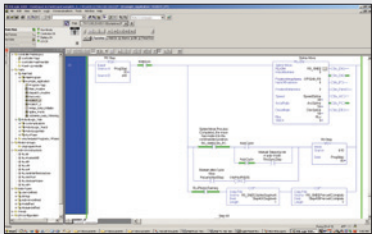


THRU-ARM CABLE MANAGEMENT



PROGRAM ROBOTS FROM RSLOGIX



SMALL DRIVE PANEL



MPL160

with MLX100 Robot Gateway

• PALLETIZING •

Payload: 160 kg

Four-axis MPL160 “Master Palletizing” robot has fast axial speeds and acceleration which reduces cycle times and increases production output. The MLX100 Robot Gateway™ provides a single unified controls platform for the robot, motion, logic and communications all in a single platform that is programmed in ladder logic.

TOP REASONS TO BUY

- Program the robot, logic, communication and peripheral motion directly from one common programming environment – RSLogix 5000
- Enables a single person to program both the robot and peripheral equipment
- Uses common PLC components that may reduce project specific spares
- Internally routed air lines and wiring through all robot axes provides maximum system reliability
- Palletizes trailer height loads for many situations
- Gripper control by DeviceNet available as an option

Flexible Palletizing Solution

- Extensive 3,024 mm vertical reach provides for palletizing loads up to 108" high on a 42" pallet, or up to 105" on a 48" pallet.
- 160 kg payload; 3,159 mm horizontal reach; ±0.5 mm repeatability. Other MPL-series available with 80-, 100-, 300-, 500- and 800-kg payloads to meet wide range of palletizing requirements.
- Features internally routed air lines and wiring between base of robot and end-of-arm tool. Hollow wrist provides wide range of wrist motion and maximum cable life.
- Can service multiple infeed conveyors and up to four pallet build locations.

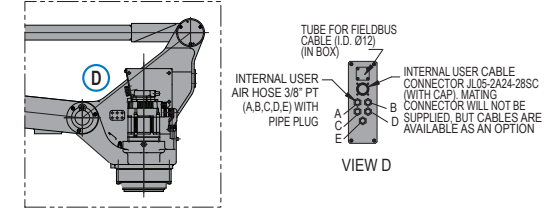
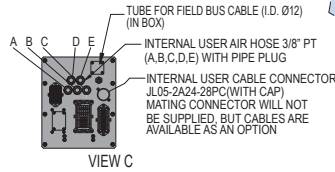
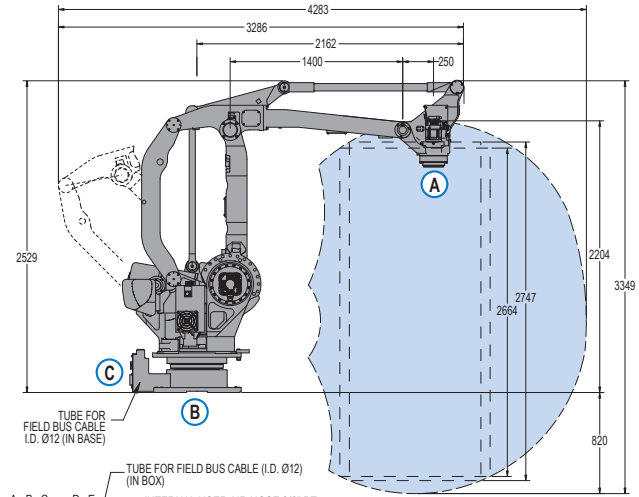
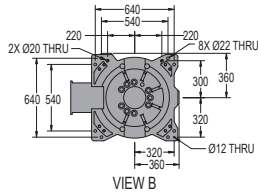
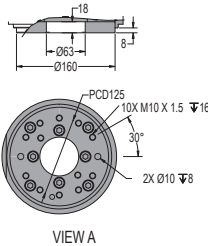
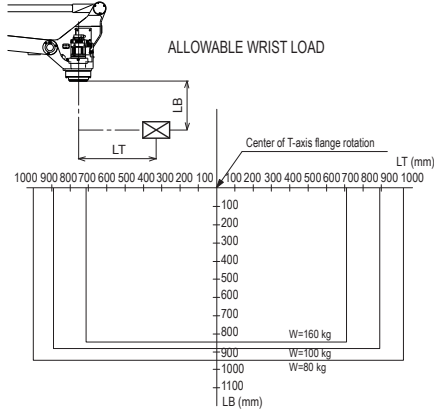
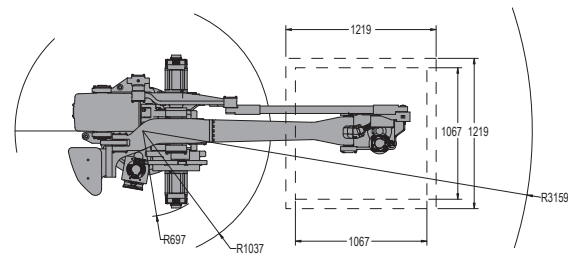
MLX100 Robot Gateway

- Robot kinematics and motion planning is performed on the MLX100 Robot Gateway minimizing ControlLogix® processor demand.

- The robot is programmed entirely on RSLogix™ 5000 using Add-On-Instructions (AOIs) in a ladder format that is familiar to your current maintenance department.
- I/O and motion expansion is accomplished via the ControlLogix platform.
- Yaskawa drives are matched to the robot and delivered on a compact panel suitable for installation in the existing machine.
- Training requirements are reduced by employing familiar hardware and programming software.
- The MLX100 Robot Gateway is available with a range of other Motoman® robots.
- Simulation and development software package (MLX-Sim) available as option.
- Operating on a ControlLogix platform, MLX provides seamless integration to Cognex vision systems using In-Sight® Explorer.
- MLX100 is powered by Agile Planet software.

MPL160 ROBOT with MLX100 ROBOT GATEWAY

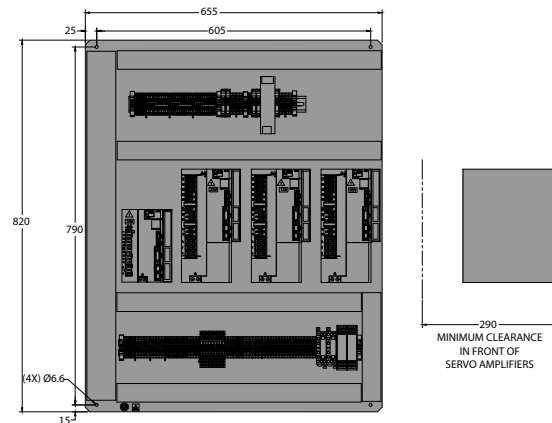
All dimensions are metric (mm) and for reference only. Please request detail drawings for all design/engineering requirements.



MPL160 SPECIFICATIONS (WITH MLX100 ROBOT GATEWAY)		
Structure	Vertical articulated type	
Controlled Axes	4	
Payload	160 kg (352.8 lbs)	
Vertical Reach	3,024 mm (119.1")	
Horizontal Reach	3,159 mm (124.4")	
Repeatability	±0.5 mm (0.02")	
Maximum Motion Range	S-Axis (Turning/Sweep)	±180°
	L-Axis (Lower Arm)	+90°/-45°
	U-Axis (Upper Arm)	+15.5°/-120°
	T-Axis (Wrist Twist)	±360°
Maximum Speed	S-Axis	112°/s
	L-Axis	116°/s
	U-Axis	116°/s
	T-Axis	275°/s
Approximate Mass	1,700 kg (3,748.5 lbs)	
Brakes	All axes	
Power Consumption	10 kVA	
T-Axis Allowable Inertia	80 kg • m ²	
Internal User Electrical Cable	23 conductors + ground	
Internal User Air Hose	5 – 3/8" PT connectors	
Fieldbus Cable Tube To Upper Arm	Yes	

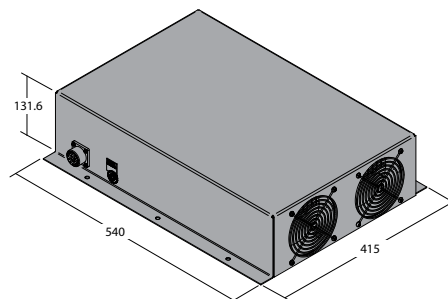
MLX100 Robot Gateway Drive Panel

Note: Gateway will be mounted in a ControlLogix rack that is not shown.



MLX100 Regenerative Resistor Pack

To be mounted on enclosure exterior



www.motoman.com

YASKAWA

MOTOMAN ROBOTICS

MOTOMAN ROBOTICS
100 AUTOMATION WAY, MIAMISBURG, OHIO 45342
TEL: 937.847.6200 ■ FAX: 937.847.6277

TECHNICAL SPECIFICATIONS SUBJECT TO CHANGE WITHOUT NOTICE
DS-493-A ©2012 YASKAWA AMERICA, INC. APRIL 2012

MOTOMAN IS A REGISTERED TRADEMARK
RSLOGIX IS A TRADEMARK OF ROCKWELL AUTOMATION, INC.
CONTROLLOGIX IS A REGISTERED TRADEMARK OF ROCKWELL AUTOMATION, INC.
ALL OTHER MARKS ARE THE TRADEMARKS AND
REGISTERED TRADEMARKS OF YASKAWA AMERICA, INC.