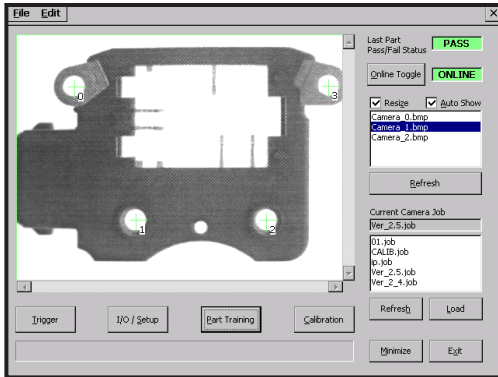


# MotoSight 2D

## 2D VISION SOLUTION



MotoSight™ 2D EasyBuilder® Edition is a hardware and software solution that easily adds vision functionality to the DX100 robot controller. Featuring a Cognex In-Sight® Micro camera and Motoman Robotics' Pendant Vision application software, MotoSight 2D is a powerful solution used to solve 2D vision applications. Cognex's EasyBuilder programming tool allows users to solve complex vision applications easily. Base line programs are provided for the DX100 controller to reduce setup and configuration time of the system. These programs are designed to cover most 2D vision applications, but can be easily modified to fit specific application needs.

## HIGHLIGHTS



### Pendant Features:

- Display camera images on the pendant.
- Monitor and change on-line camera status.
- Display pass/fail status.
- Auto display most recent camera image.
- Display graphic overlays on captured images.
- Calibrate camera using pendant.

### Communication:

- The DX100 controller communicates directly with the Cognex In-Sight camera over Ethernet.

### Vision Features:

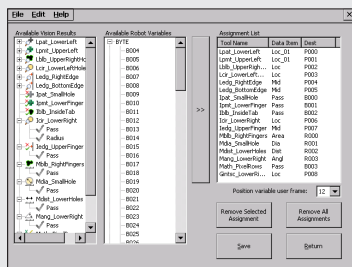
- 1050 In-Sight Micro IMAGE Sensor
  - 1/3-inch CCD
  - 640 x 480 VGA
  - 60 frames per second
  - Lens type CS-mount and C-mount (with 5 mm extension, included)
- EasyBuilder is also available for customizing solutions.
- Area-based search, boundary-based PatFind®, image processing, blob, edge, histogram, standard mathematical and string handling functions.
- Advanced option includes a vision operator interface to view images from the camera system.
- World's smallest smart camera.
- Less light sensitivity versus other threshold level sensors.
- High-res cameras also available.

### COMPATIBILITY:

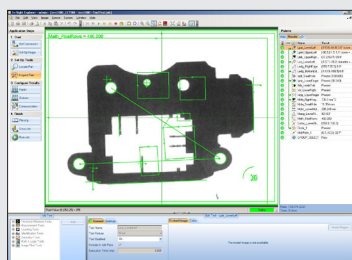
- In-Sight Micro 1050, 1100 series and 1400 series
- In-Sight 5000 series
- DX100 controller with version DS1.45.xx-A-14 or later MotoPlus™ enabled version
- In-Sight Explorer EasyBuilder version 4.3.5

### ARM YOURSELF...

...with MotoSight 2D...to see the unmatched, powerful capabilities of Motoman robotic vision solutions.



ASSIGNMENTS



COGNEX IN-SIGHT EXPLORER EASYBUILDER

## TOP 3 REASONS TO BUY!

- Easy-to-integrate vision solution.
- Adds flexibility to robot applications.
- Reduces cost of expensive tooling for locating parts.