

# MotoSight 3D CortexVision



## POWERFUL, PRECISE, ACCURATE

MotoSight 3D CortexVision simplifies the use of 3D vision in robotic guidance applications and functions very similar to the human vision process in learning and recognition. Using a single camera mounted to the robot, this powerful vision system is ideal for precise part location required for assembly, racking, dispensing, machine loading, product sortation and welding applications.

No calibration required! The point-and-click software environment and self-learning technology dramatically reduce setup time. Using the robot-mounted camera, the system takes multiple pictures and automatically refines the position of the camera to optimally locate the part.

## HIGHLIGHTS

### Evolutional Change

- 3D robot guidance.
- Using single camera (GigE) technology, MotoSight 3D CortexVision identifies an object and its position in six degrees of freedom (X, Y, Z, roll, pitch and yaw).

### Applications

- Assembly
- Dispensing
- Identification
- Racking
- Sortation
- Welding

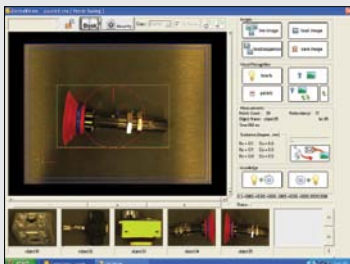
### Powerful Features

- Self-learning technology virtually eliminates setup time.
- Ability to learn large number of objects and recognize any of the objects regardless of presentation within the camera's visual field.

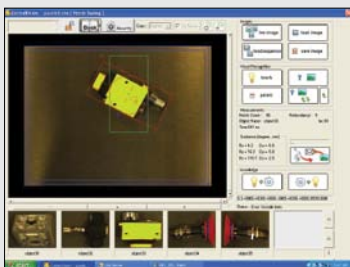
- Within a second, the vision process identifies the part in front of the camera and where it is located.
- Point-and-click teaching with an easy-to-use interface results in minimal time to train new parts.
- No calibration required due to advanced algorithm and unique recognition of patterns programmed.
- Simple user interface makes it easy to train complex parts.
- Auto-refinement improves overall accuracy; accuracy within  $\pm 0.5$  mm. Higher accuracy can be achieved with additional pictures.

### Vision Features

- Embedded vision processor
- GigE camera technology
- High-flex cabling
- Ethernet communication
- Single 10-meter cable
- IP67 camera available



PART TRAINING



FINDING PARTS IN SIX DEGREES OF FREEDOM

## TOP REASONS TO BUY!

- Train new parts in seconds
- No calibration required
- Simple point-and-click teaching; no programming required
- Color camera technology

[www.motoman.com](http://www.motoman.com)

MOTOMAN ROBOTICS  
100 AUTOMATION WAY, MIAMISBURG, OHIO 45342  
TEL: 937.847.6200 ■ FAX: 937.847.6277

TECHNICAL SPECIFICATIONS  
SUBJECT TO CHANGE WITHOUT NOTICE  
DS-490-A ©2011 YASKAWA AMERICA, INC. JUNE 2011

MOTOMAN IS A REGISTERED TRADEMARK  
ALL OTHER MARKS ARE THE TRADEMARKS AND  
REGISTERED TRADEMARKS OF YASKAWA AMERICA, INC.