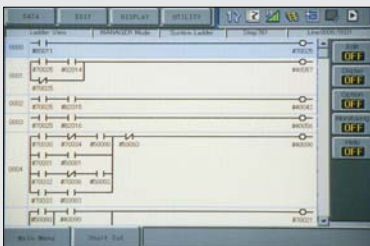
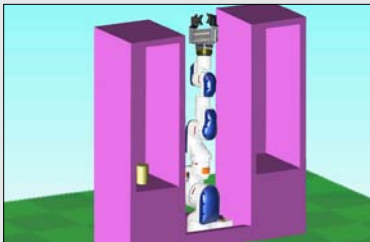


THRU-ARM CABLE AND HOSE ROUTING



LADDER EDITOR



SMALL FOOTPRINT

TOP REASONS TO BUY

- Slim, 7-axis design optimizes space; provides “human-like” flexibility and range of motion, even in tight spaces
- Mounts virtually anywhere in any orientation
- Can be used in environments that are hazardous to humans
- Labor savings justifies capital investment



SIA50D

MACHINE TENDING • PART TRANSFER • INJECTION MOLDING
ASSEMBLY • PACKAGING • INSPECTION

Payload: 50 kg

Compact, Lean and Powerful Arm

- 7-axis actuator-based design and best-in-class wrist performance characteristics provide amazing freedom of movement, coupled with ability to maneuver in very tight areas.
- Superior dexterity enables robot to reorient elbow(s) without affecting hand position or causing self-interference.
- Agile, versatile robot opens up a wide range of industrial applications to robots: ideal for assembly, injection molding, inspection, machine tending and a host of other operations.
- 50 kg (110.3 lb) payload; 2,597 mm (102.2") vertical reach; 1,630 mm (64.2") horizontal reach; ±0.1 mm (0.004") repeatability.
- Slim, compact and powerful – robot can straighten vertically to take up only one square foot of floorspace and is just 493 mm (19.4") wide at widest point.
- Short axis lengths and extreme motion flexibility allow slim manipulator to be positioned out of normal working area (i.e. floor-, ceiling-, wall-, incline- or machine-mounted) without limiting motion range of any axis.

- Mounting SIA50D robot between two machine tools provides open access to machines for fixture maintenance, adjustment or testing.
- Operator has clear access to machine operator station for entering offsets, maintenance or other operations.

DX100 Controller

- Patented multiple robot control supports up to 8 robots/72 axes.
- Windows® CE programming pendant with color touch screen and USB interface.
- Faster processing speeds for smoother interpolation. Quicker I/O response. Accelerated Ethernet communication.
- Extensive I/O suite includes integral PLC and touch screen HMI, 2,048 I/O and graphical ladder editor.
- Supports all major fieldbus networks, including EtherNet/IP, DeviceNet, Profibus-DP and many others.
- Compliant to ANSI/RIA R15.06-1999 and other relevant ISO and CSA safety standards. Optional Category 3 functional safety unit.

