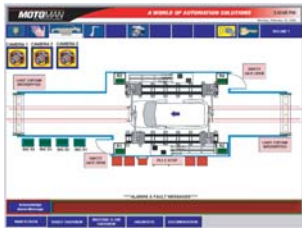


# MOTOMAN NEWS RELEASE

FOR IMMEDIATE RELEASE  
SEPTEMBER 2006

CONTACT: Sally Fairchild  
937.847.3202

## MOTOMAN OFFERS MOTOHMI: INTUITIVE PC-BASED INTERFACE FOR ROBOTS AND PLCs



Dayton, Ohio — Motoman's MotoHMI™ operator station provides an advanced PC-based, human machine interface (HMI) for robot systems and programmable logic controllers (PLCs). An intuitive touch-screen operator interface allows the user to control the robot system, view production data, correct machine malfunctions, view manuals and prints, and view and debug the PLC ladder programming. This user-friendly interface minimizes system complexity and operator training. Production status screens improve production control, and graphical displays reduce troubleshooting time. Password-protected screens eliminate unauthorized adjustments.

The MotoHMI package includes an industrial PC with a Pentium® IV, 2GHz processor, 512 MB RAM, a 40-GB hard drive, a 15-inch flat panel monitor with high-resolution touch screen, a DuraPoint® mouse, an uninterruptible power supply, two expansion slots, and a variety of cable options. The operator station features Cycle Start and E-Stop buttons and can be pedestal- or fence-mounted. An Ethernet port is provided for communication with the Motoman robot controller.

MotoHMI provides standard HMI screens that can be customized for specific applications. Optional RSView® software allows users to modify Motoman-supplied HMI interfaces or design their own. Other Motoman PC software packages can be deployed on the same industrial PC. Packages such as RobotPro® NX (expert maintenance and repair); Floppy Disk Emulator, Visual Data Exchange, Visual DCI, MotoAdmin and File Transfer Protocol (file management and communications); and MotoSim® EG (simulation and off-line programming) are natural companion products that add extensive capabilities.

For more information on Motoman products and services, visit the corporate website at [www.motoman.com](http://www.motoman.com), call 937.847.6200, or write to Motoman Inc., 805 Liberty Lane, West Carrollton, Ohio, USA 45449.

###

*Pentium is a registered trademark of Intel.  
DuraPoint is a registered trademark of Interlink Electronics.  
RSView is a registered trademark of Rockwell Automation.  
All other marks are the trademarks and registered trademarks of Motoman Inc.*