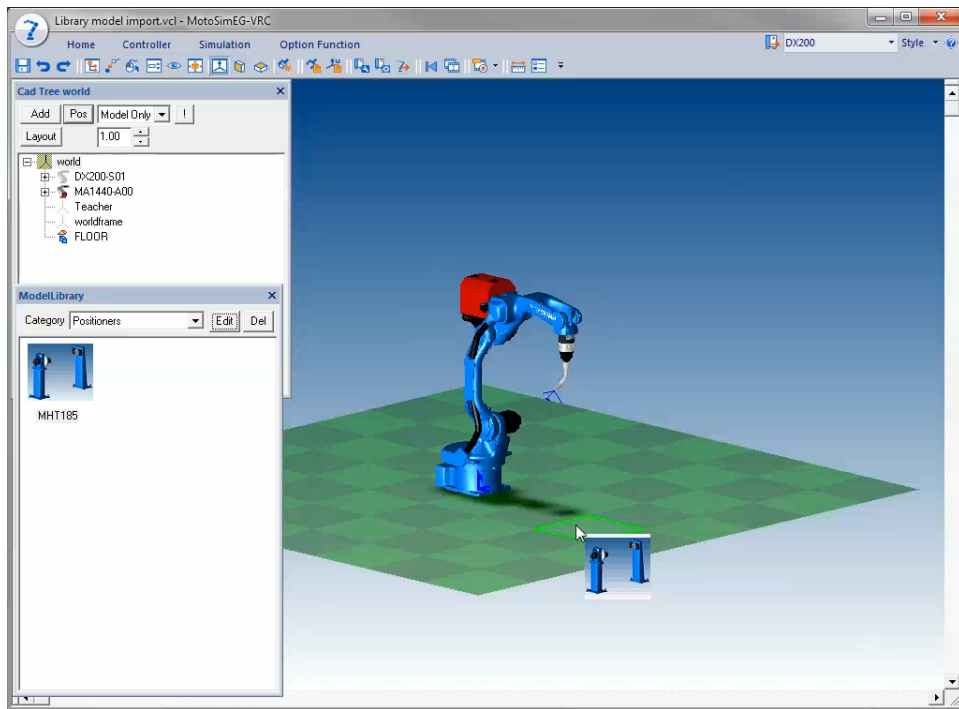


1. Open a cell containing a robot and station (1 axis).
2. Open the ModelLibrary from the Home tab and change the Category to "Positioners".

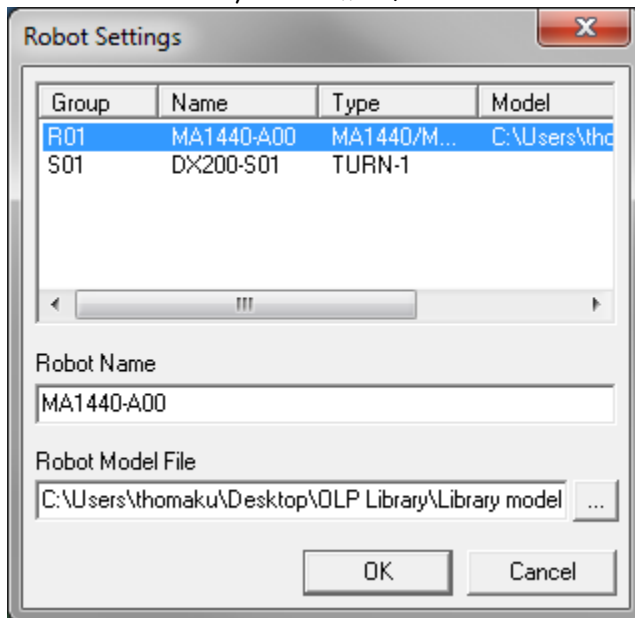


3. Click and drag the desired positioner to a location on the floor.

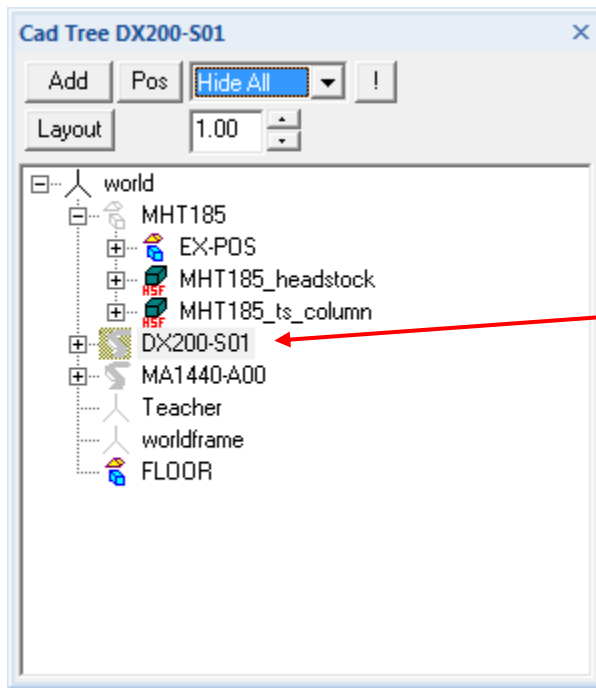


Note: If more than one station using the same models is to be added, MotoSimEG-VRC will automatically assign a -2, -3, etc. to the name of the additional models added.

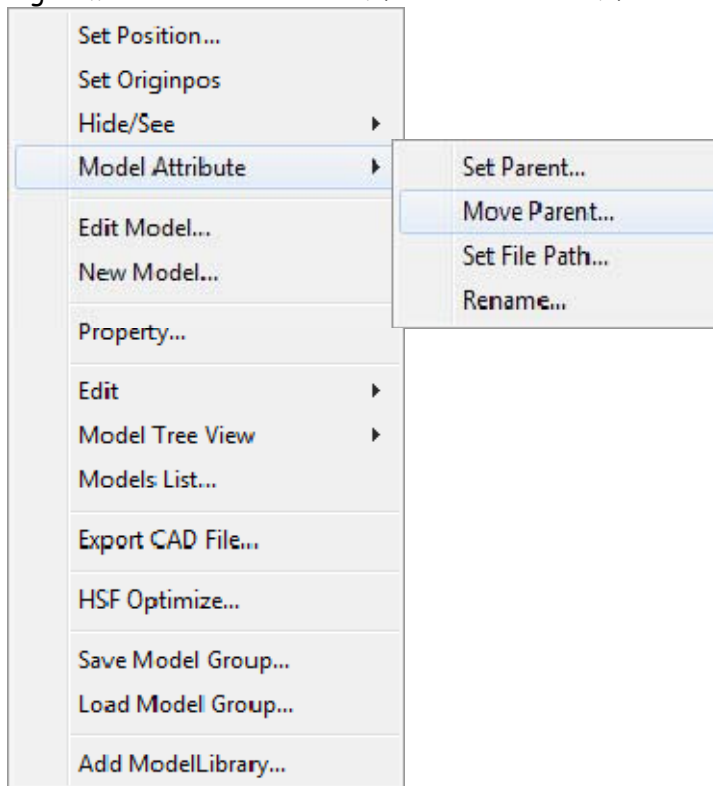
Note: The names for the robot and stations are set by the name entered in the Robot Settings dialog box when the initializing the controller as shown below. For these instructions, The name of the Station to be used is DX200-S01.



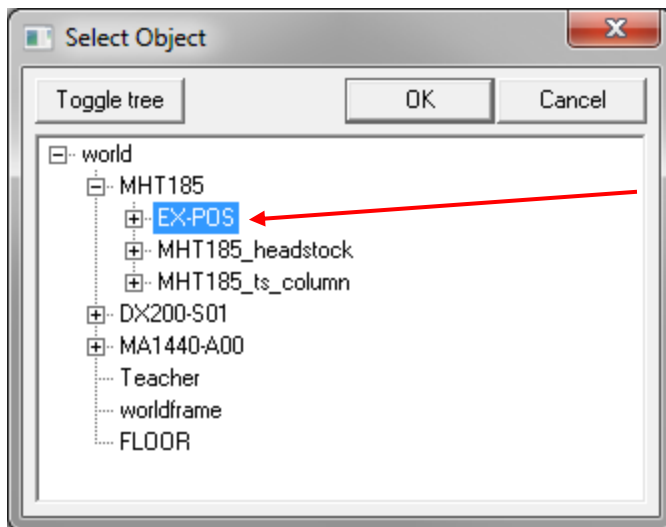
4. In the CADTree, select the Station (DX200-S01) that was added with the robot.



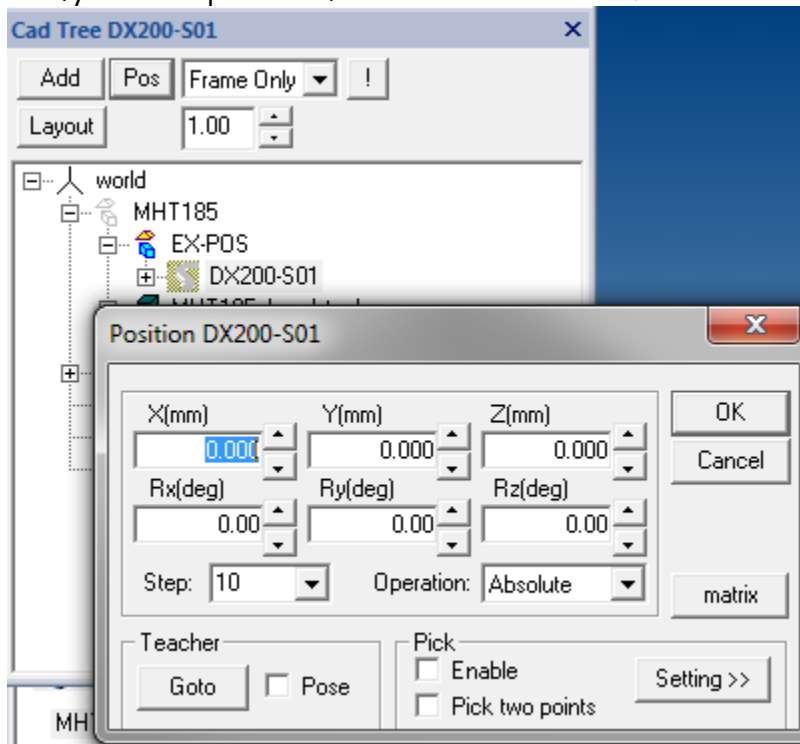
5. Right mouse click and select Model Attribute - Move Parent...



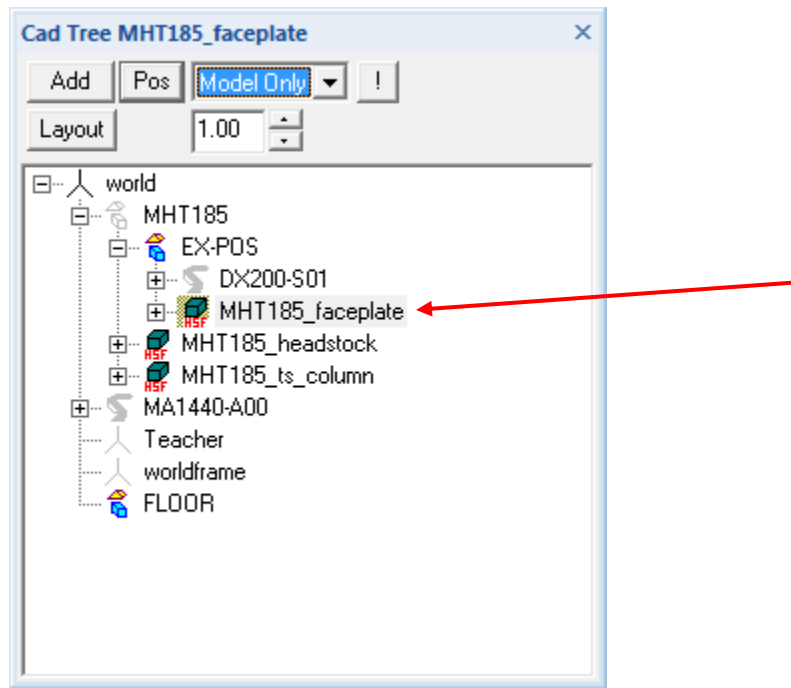
6. Select the model EX-POS of the positioner as shown.



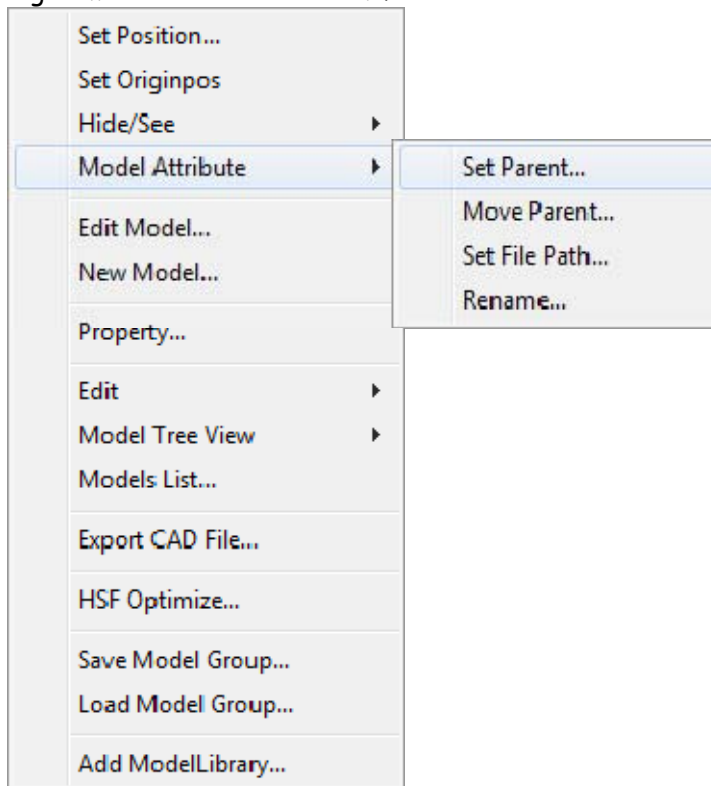
7. Click OK
8. Verify that the position of the Station is all zeros.



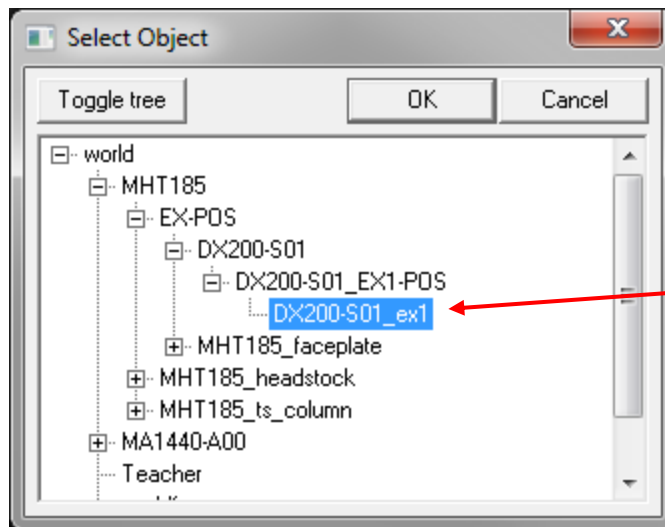
9. Expand the "EX-POS" model and select the "faceplate".



10. Right mouse click and select Model Attribute - Set Parent...

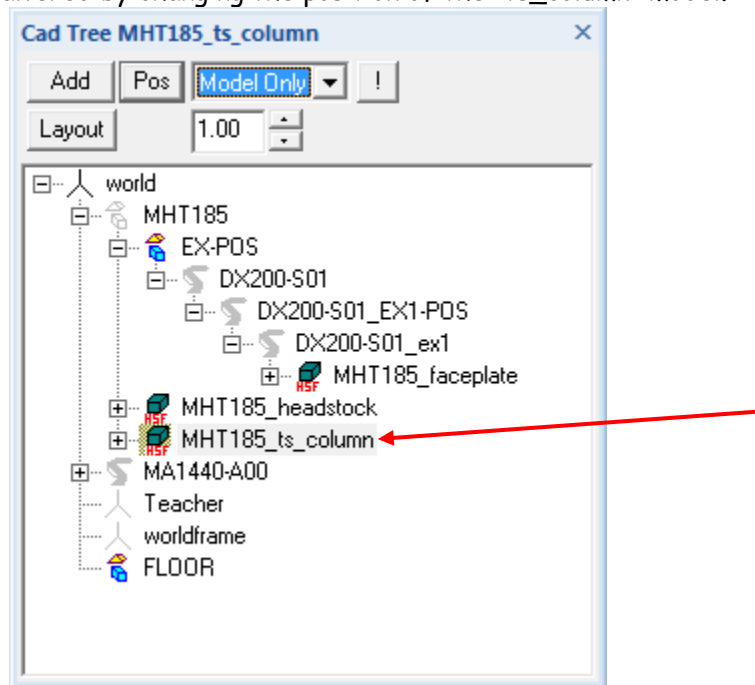


11. Set the parent to be the stations' axis model as shown.



12. Click OK

13. The Headstock/Tailstock span is set for 1 meter, pin to pin. This span can be altered by changing the position of the "ts_column" model.



14. The motomount_ts_adapter can be made to be a child of the Faceplate so that it may rotate when the axis is jogged.