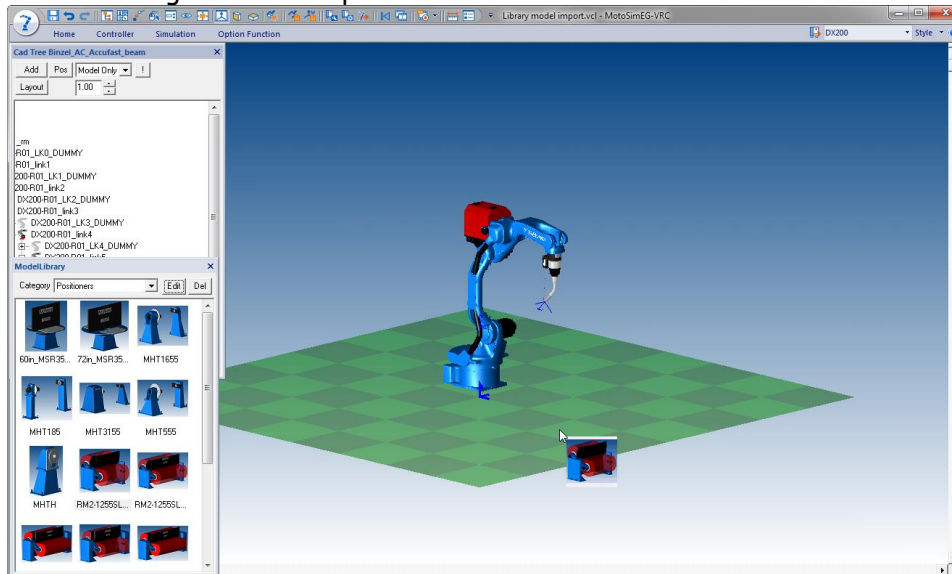


Adding RM2 Standard Positioners

1. Open a cell containing a robot configured for a RM2 positioner.
2. Open the ModelLibrary from the Home tab and change the Category to "Positioners".



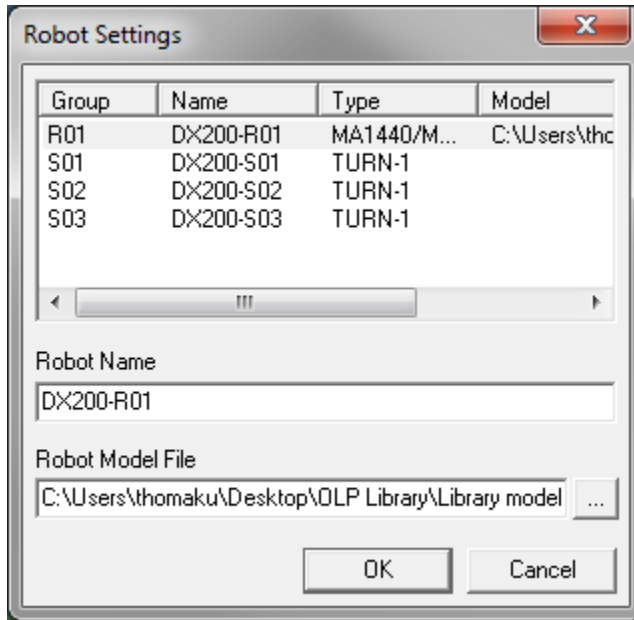
3. Click and drag the desired positioner to a location on the floor.



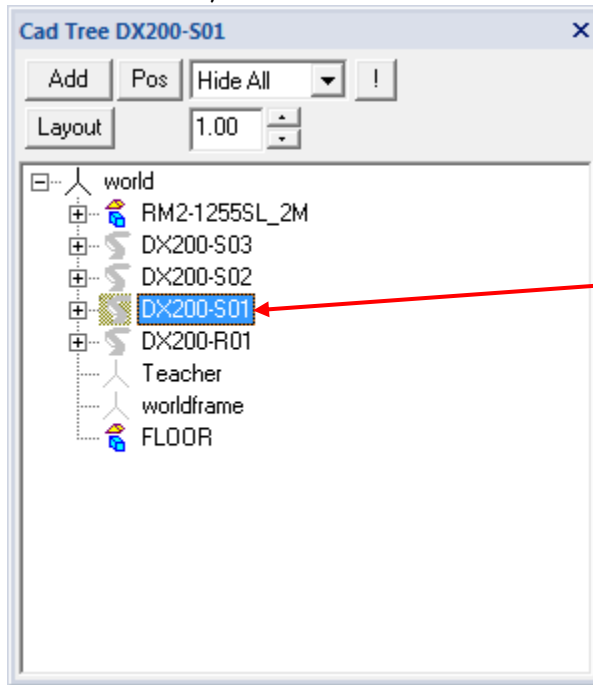
Adding RM2 Standard Positioners

Note: If more than one positioner using the same models is to be added, MotoSimEG-VRC will automatically assign a -2, -3, etc. to the name of the additional models added.

Note: The names for the robot and stations are set by the name entered in the Robot Settings dialog box when the initializing the controller as shown below. For these instructions, The Station names to be used are DX200-S01, DX200-S02 and DX200-S03.

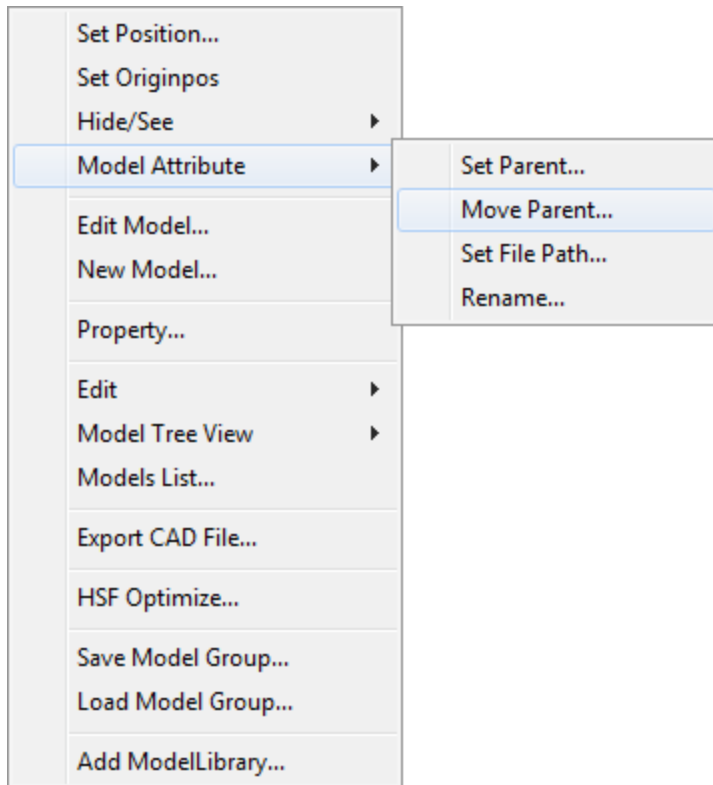


4. In the CADTree, select the DX200-S01 model that was added with the robot.



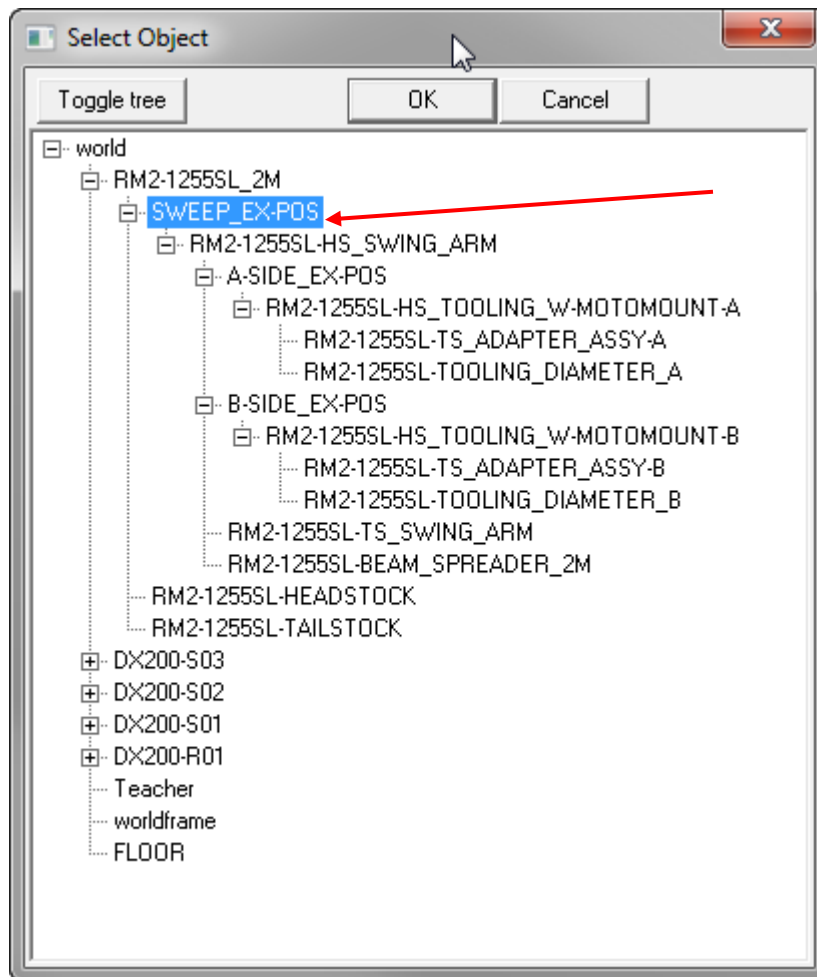
5. Right mouse click and select Model Attribute - Move Parent...

Adding RM2 Standard Positioners



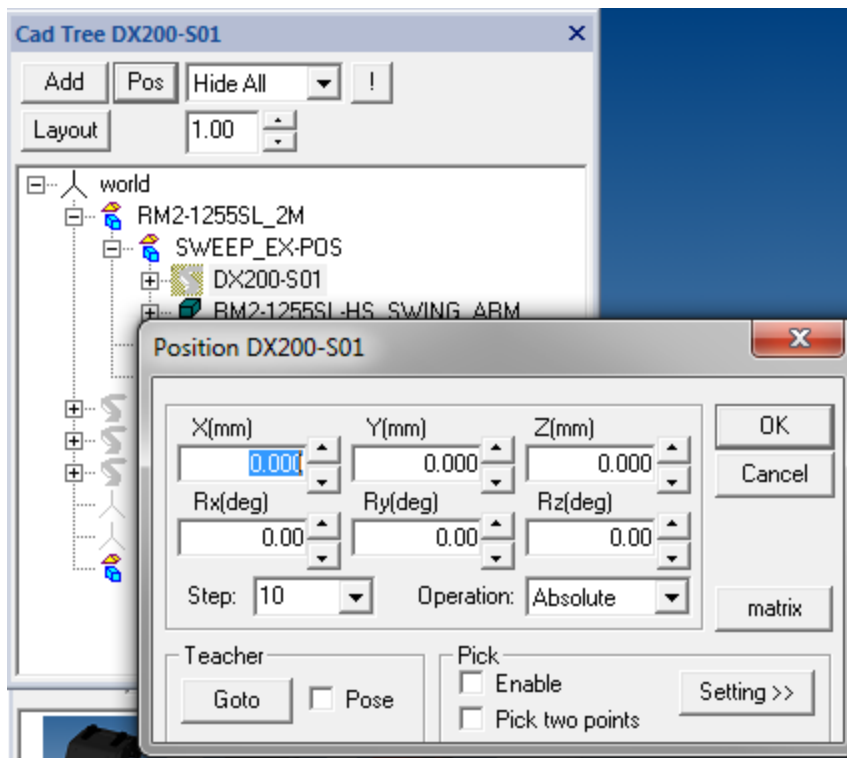
6. Expand the positioner model that was added and select the model SWEEP_EX-POS of the positioner as shown.

Adding RM2 Standard Positioners

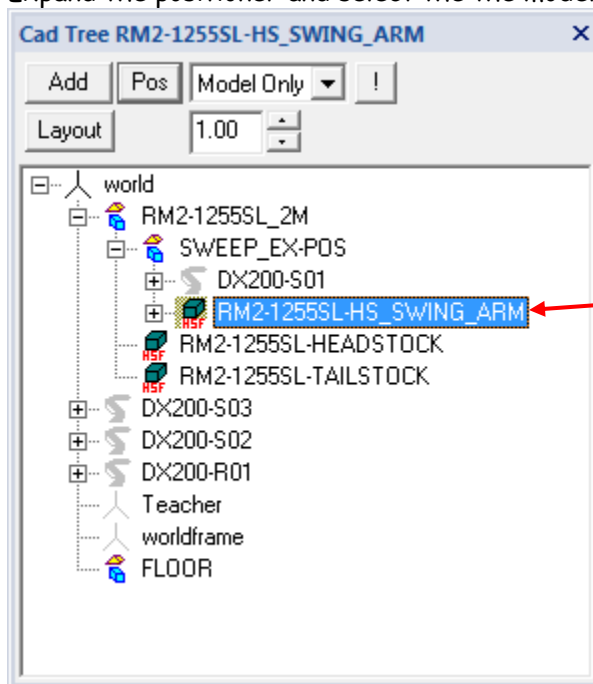


7. Click OK
8. Verify that the position of the DX200-S01 is all zeros.

Adding RM2 Standard Positioners

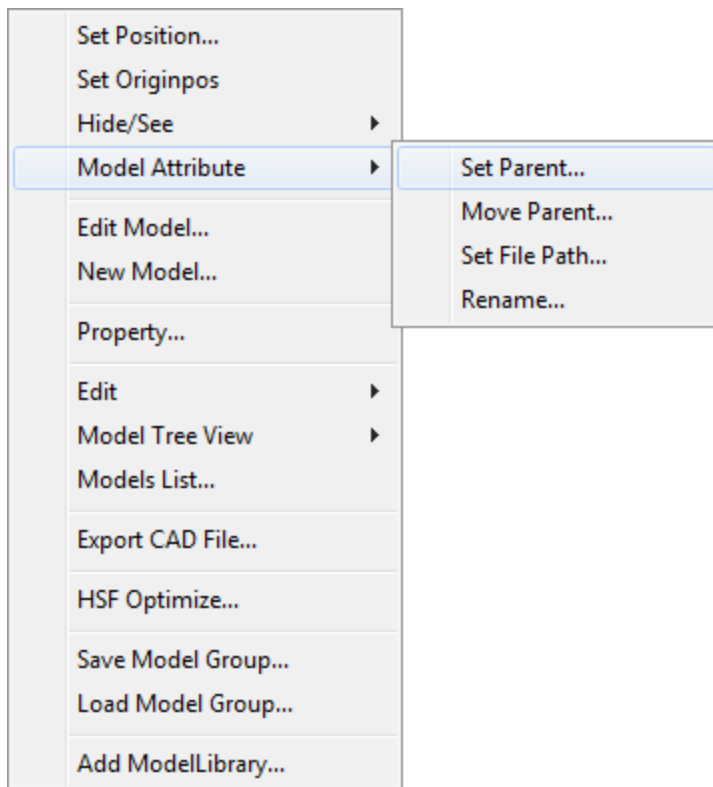


- Expand the positioner and select the the model RM2-1255SL-HS_SWING_ARM.

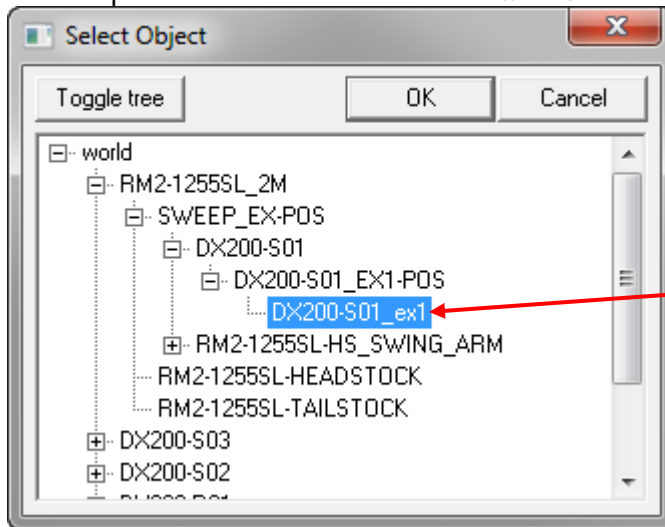


- Right mouse click and select Model Attribute - Set Parent...

Adding RM2 Standard Positioners



11. Set the parent to be the stations' axis model.

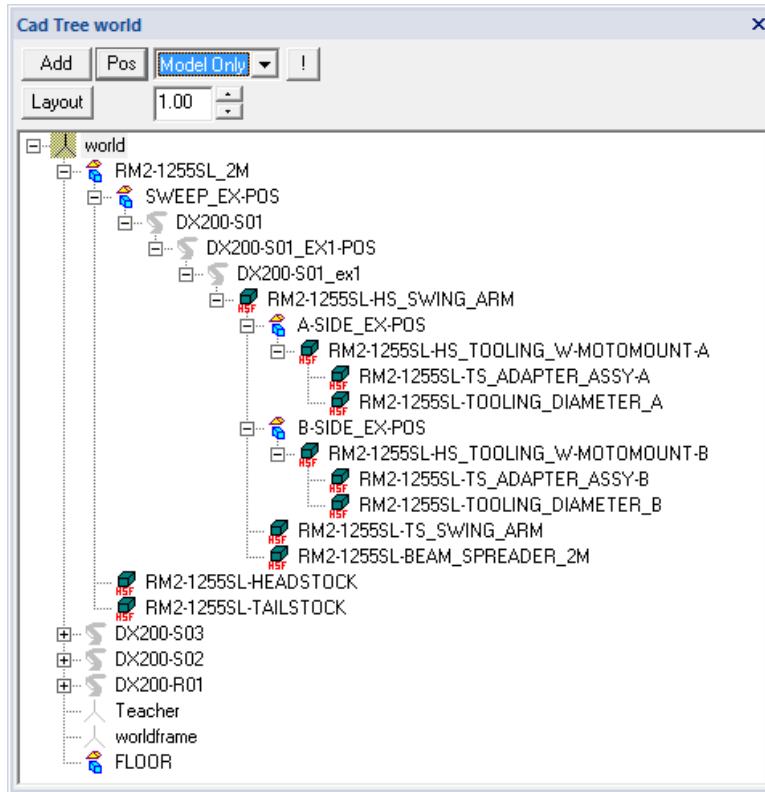


12. Click OK.

*The Sweep axis (S01) can be controlled/jogged at this time. The Parents and Positions of DX200-S02, DX200-S03, A-SIDE_EX-POS and B-SIDE_EX-POS must be set.

Adding RM2 Standard Positioners

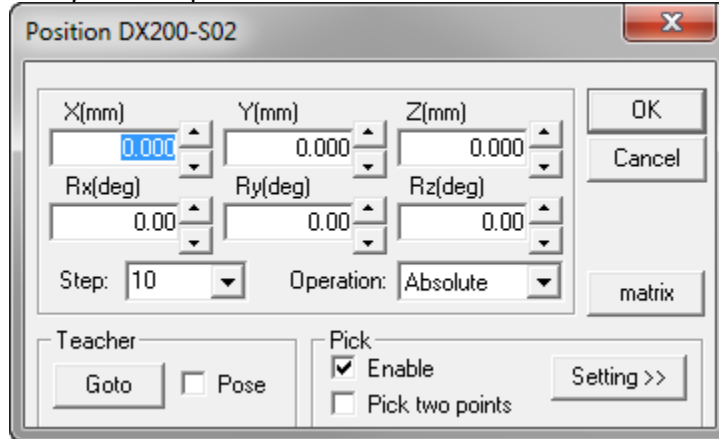
13. The CADTree should look like the one shown below.



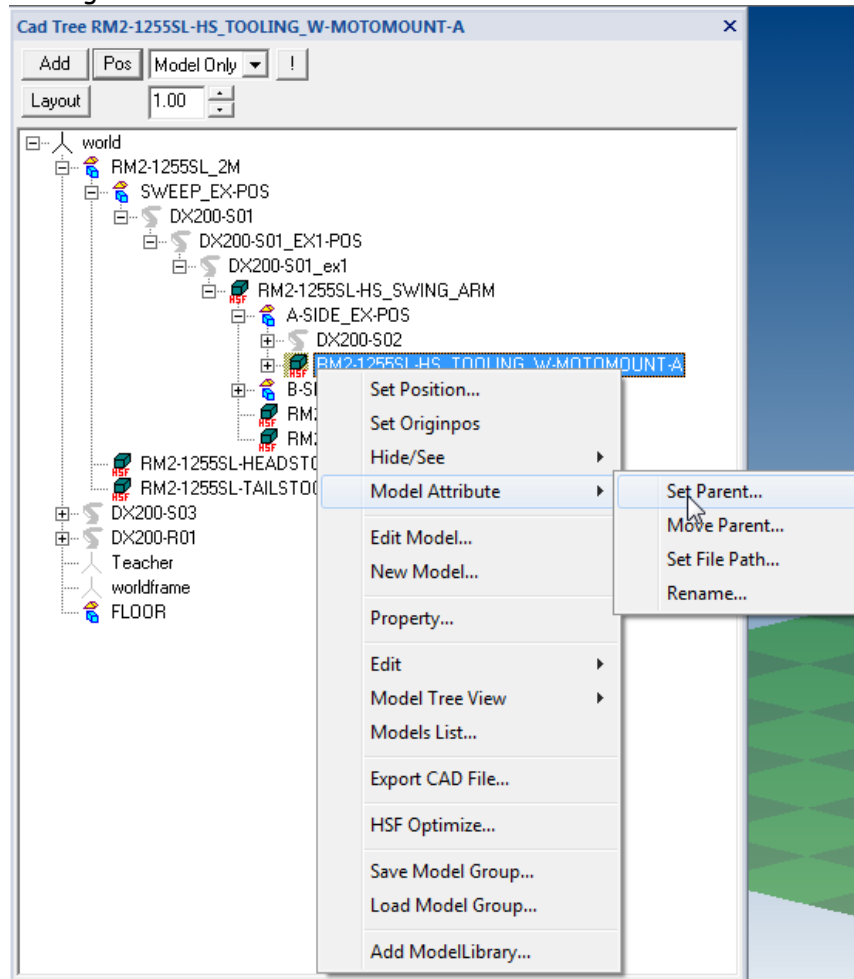
14. Select the model for Station 2 (DX200-S02 in this example) in the CADTree and Right-Mouse click to select Model Attribute - Move Parent.

Adding RM2 Standard Positioners

17. Open the Position Dialog for the Station 2 (DX200-S02 in this example) model and verify that all position values are zero.

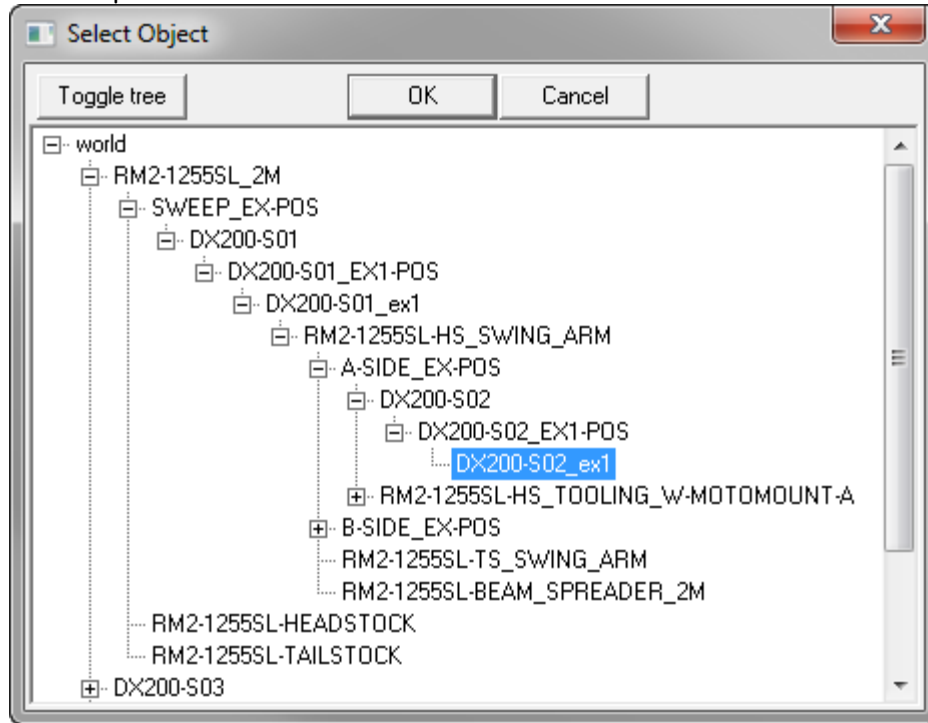


18. Select the model RM2-1255SL-HS_TOOLING_W-MOTOMOUNT-A in the CADTree and Right-Mouse click to select Model Attribute - Set Parent.



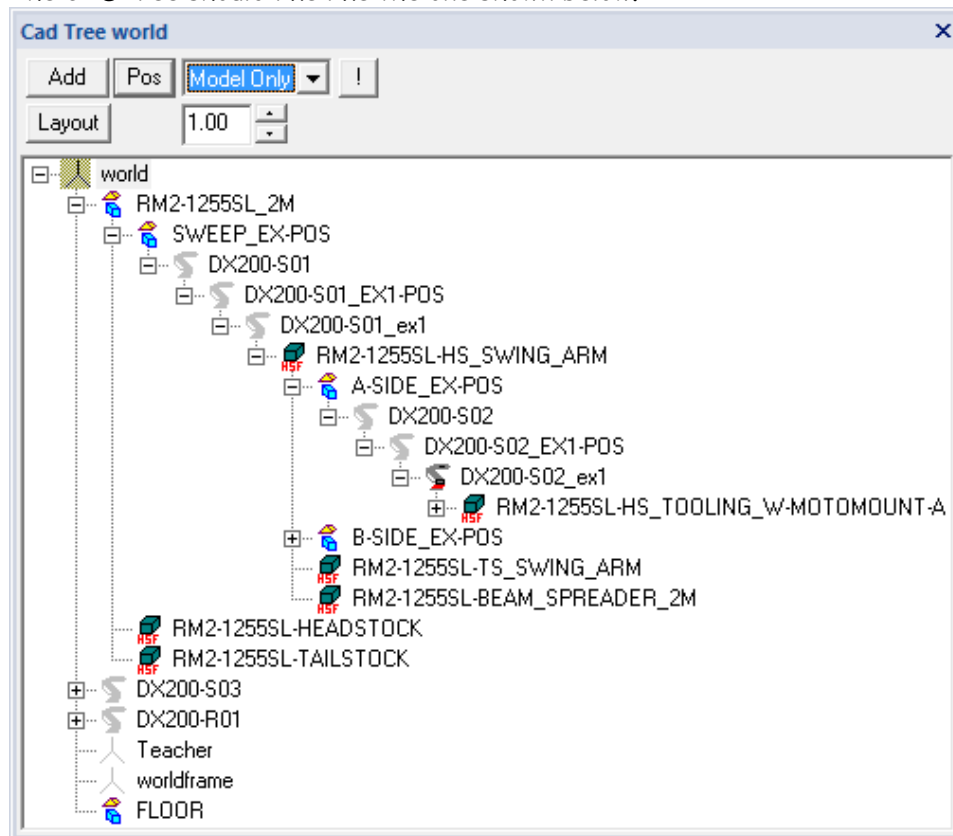
Adding RM2 Standard Positioners

19. Set the parent of the model as shown below.



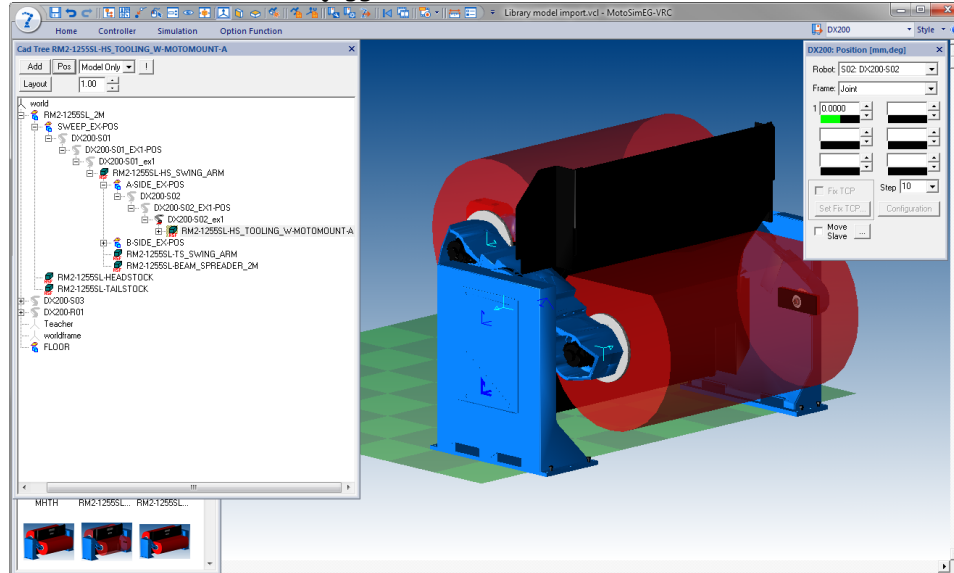
20. Click OK.

21. The CADTree should like the one shown below.



Adding RM2 Standard Positioners

22. Side A (S02) can now be jogged.



23. Repeat steps 14 through 21 using the appropriate models (DX200-S03, B-SIDE_EX-POS and RM2-1255SL-HS_TOOLING_W-MOTOMOUNT-B) for side B.