

# READ FIRST!!

## DX200 Functional Safety Unit (FSU)

Data related to the functional safety function is saved in the function safety board memory in a duplicated manner for safety.

When the controller power is turned ON, checks are performed for verifying that dual data sets are the same.

If the dual data sets have different information an Alarm 0300: “VERIFY ERROR (SYSTEM CONFIG-DATA) [10]” occurs.

In the system with the functional safety function, a message “Select Functional Safety Board FLASH Reset” displays in Maintenance Mode after the following operations:

- Turning ON or OFF causes error in verification
- The data related to the functional safety function is loaded from an external storage.
- The home position calibration or a home position change operation is performed.
- A tool calibration operation is performed.
- A zeroing function is performed.
- Encoder is reset
- Tool weight and tool center settings are performed in the load estimation function.

In case one of the above operations has been performed, reset the data per the following instructions.

In maintenance mode, there are cases when parameters relevant to the functional safety function are rewritten by several setting operation. For this reason, perform functional safety board Flash reset operation by following the “RESETTING FLASH DATA” section.

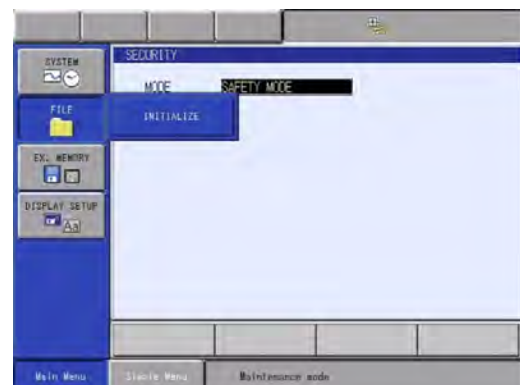
### RESETTING FLASH DATA

If an Alarm 0300 “VERIFY ERROR (SYSTEM CONFIG-DATA [10])” occurs when the controller power is turned ON reset the data of the functional safety board by completing the following;

With the controller power turned ON, Alarm 0300: “VERIFY ERROR (SYSTEM CONFIG-DATA) [10]” occurring and Maintenance Mode in Start-up.

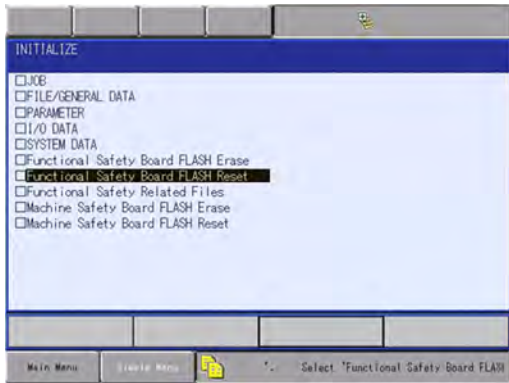


1. Place security mode in {SAFETY MODE}. See the “SETTING SECURITY MODE TO SAFETY” section.
2. Select {FILE} under the Main Menu. Then, select {INITIALIZE} under the sub menu.
  - INITIALIZE window appears.

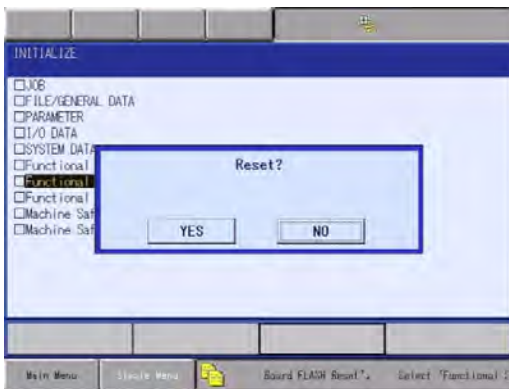


### RESETTING FLASH DATA Continue

3. Move the cursor to {Functional Safety Board FLASH Reset} and press [ENTER].
  - The dialog box “Reset?” displays.



4. Select [YES].
  - The safety function board data is re-set.
  - A few seconds later, the buzzer sounds and the data setting is completed



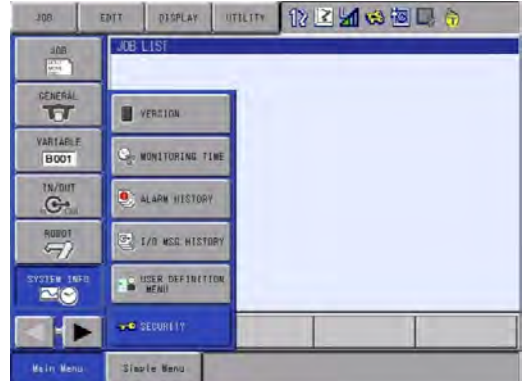
5. Turn the controller power OFF and then back ON once the data reset is complete.

### SETTING SECURITY MODE TO SAFETY

Place the security mode to Safety when using the functional safety function settings of the condition file. Authorized safety personnel are to perform these file settings.

To set security mode to safety mode;

1. Press {SYSTEM INFO} under the Main Menu.



2. Press {SECURITY} in the sub menu.
3. Change the current mode to {SAFETY MODE}.
  - Pressing [SELECT]
  - Move cursor to {SAFETY MODE}
  - Press [SELECT] again.



4. Enter password for Mode and press [ENTER].
  - {SAFETY MODE} is now set.

---

Yaskawa America, Inc.  
 Motoman Robotics Division  
 100 Automation Way  
 Miamisburg, OH 45342  
 TEL: 937.847.6200  
 FAX: 937.847.6277  
 24-HOURS HOTLINE: 937.847.3200  
 www.motoman.com