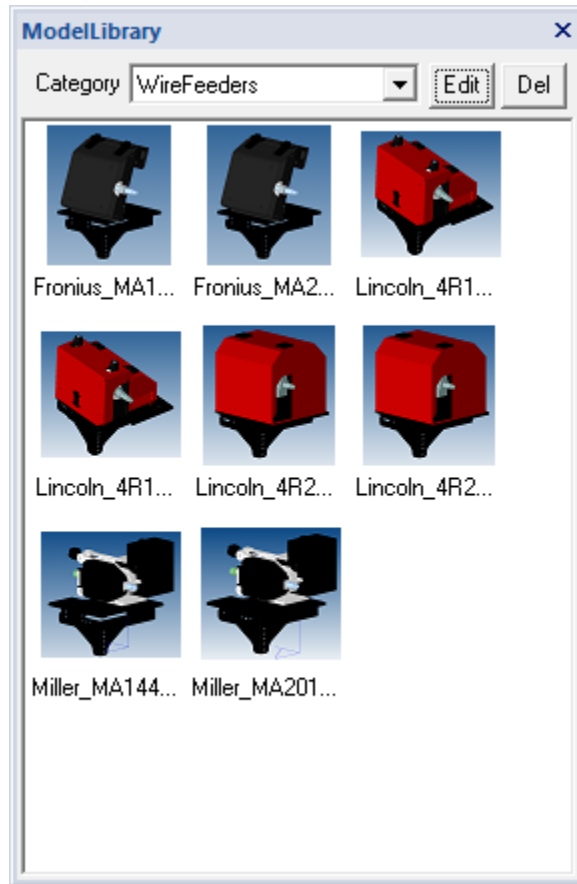
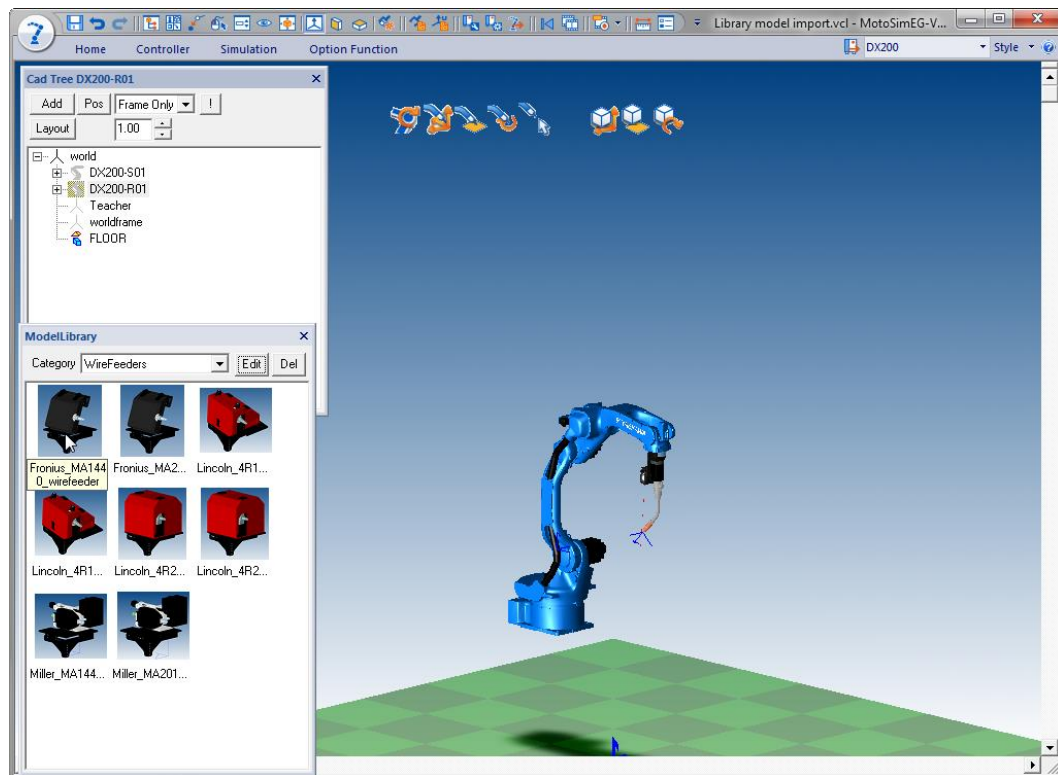


1. Open a cell.
2. Open the ModelLibrary from the Home tab and change the Category to "Wirefeeders".

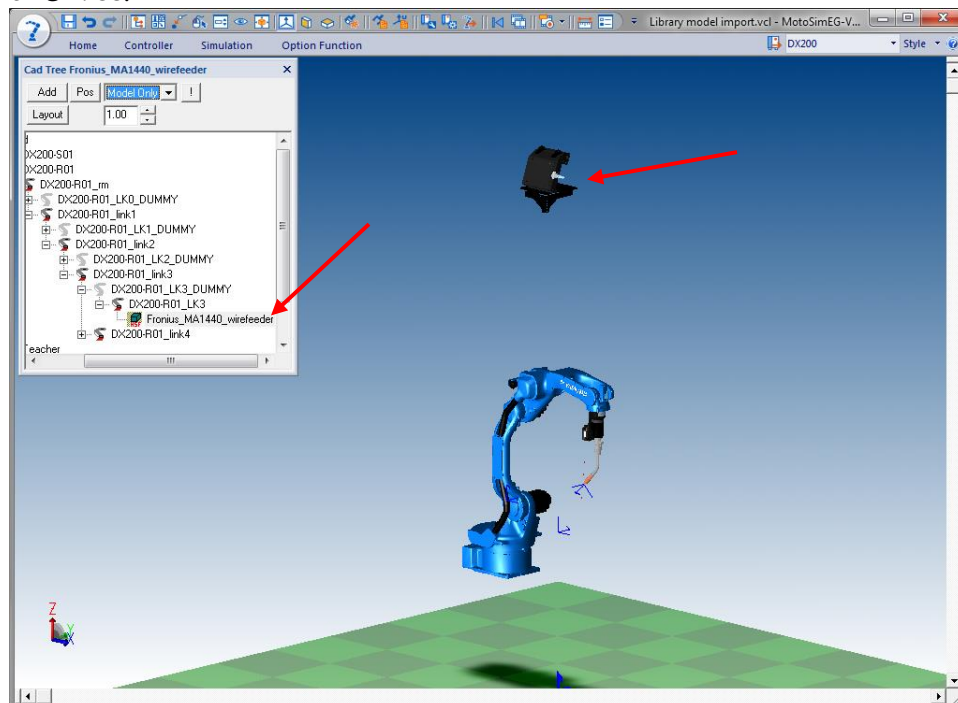


3. Select the appropriate wirefeeder from the ModelLibrary.  
*Separate wirefeeders have been made for the robot models due to the wirefeeders requiring different offsets from the U-axis (Joint 3).*

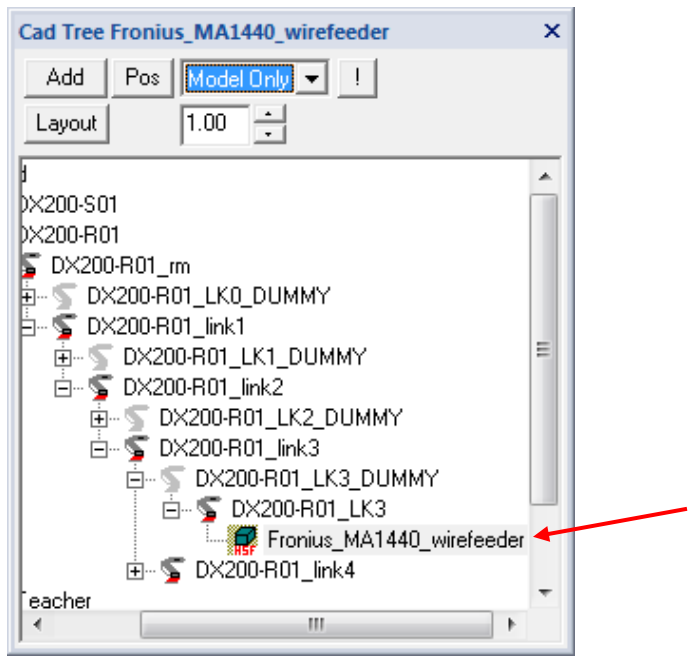
## ADDING WIREFEEDERS



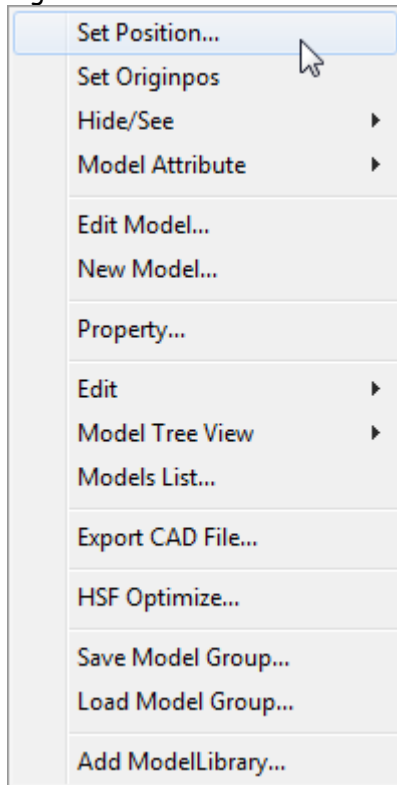
4. Drag this model until the cursor highlights a surface of the "U"-axis (Joint 3) of the robot. The model will appear, offset from the joint, in the cell. It will also be in the CADTree.



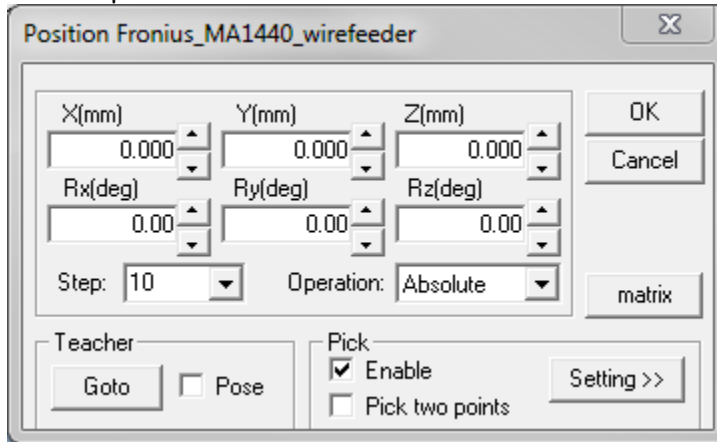
5. In the CADTree, select the wirefeeder that was added.



6. Right mouse click and select Set Position...



- Set the position to be all zeros as shown and click OK.



- The wirefeeder is now positioned correctly and will move with the robot.

