

## SPI Pendant Interface

### HUMAN MACHINE INTERFACE FOR ROBOTIC APPLICATIONS

#### KEY BENEFITS

Allows the user to create a workflow process without thinking about robot programming

Easily integrates advanced features such as macros, call jobs and position levels

Templates allow the user to add new products quickly

Industry familiar naming allows quick user adoption

#### FEATURES

Production data screen

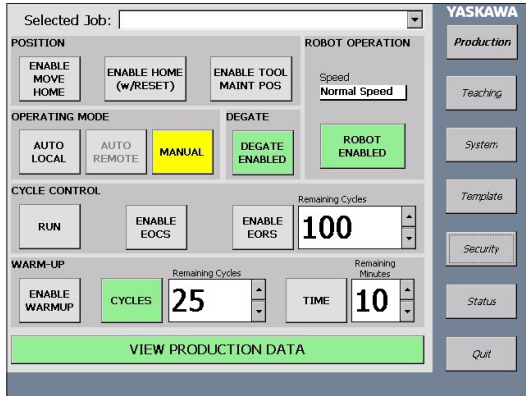
Built-in mold warm-up option

Part stacking option

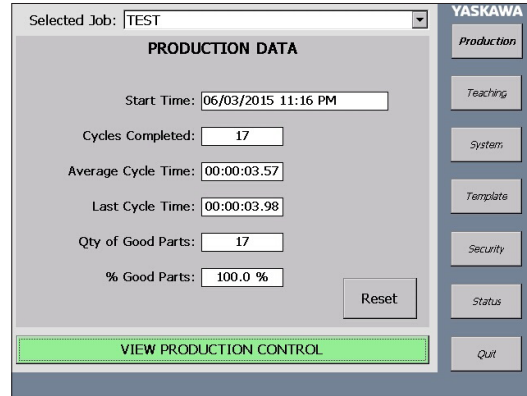
Three levels of security

- Easy-to-use graphical interface for Motoman® robots utilized in the plastic injection molding industry.
- Provides the ability to quickly create and modify programs without knowledge of our proprietary INFORM robot programming language.
- Icon-driven interface allows operators to develop program flow (without robot programming).
  - Programs are created by defining a sequence of easy-to-understand job actions
  - For actions requiring robot motion, the robot is jogged into position and the location is recorded
  - Once a list of program actions is complete, the SPI Pendant Interface generates a robot program in our native INFORM language
  - The robot program can be started and controlled from the SPI Pendant Interface without navigating to other pendant screens
- A “Setup Wizard” leads users through a series of configuration options for robots, conveyors, de-gating stations and more.
- The I/O interface uses a standard EuroMap 67 or EuroMap 12 format (optional hardware interface available). Customization is available if required.
- SPI Pendant Interface supports -
  - Multiple robots configured in top or side unloading position
  - Multiple external axes of base or station configuration
  - Multiple grippers; each with multiple zones and user-defined I/O control
  - Multiple conveyor/drop locations; each with individual stacking sequence defined
  - Multiple de-gating stations
- For use with most Motoman 6-axis robots with DX200 controller. DX100 and FS100 controllers are also compatible with pendant upgrade to .NET 3.5 compact framework.

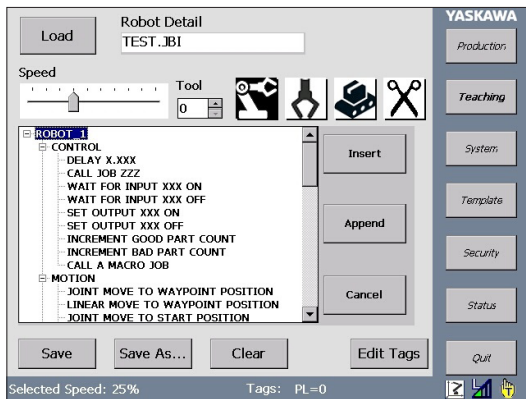
# SPI Pendant Interface



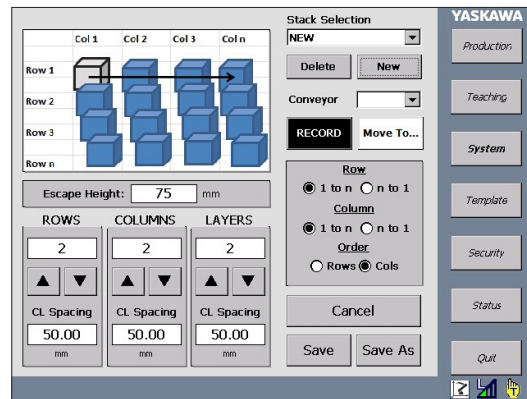
PRODUCTION CONTROL SCREEN



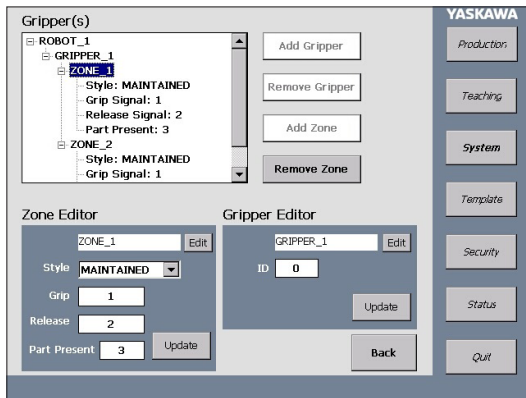
PRODUCTION DATA SCREEN



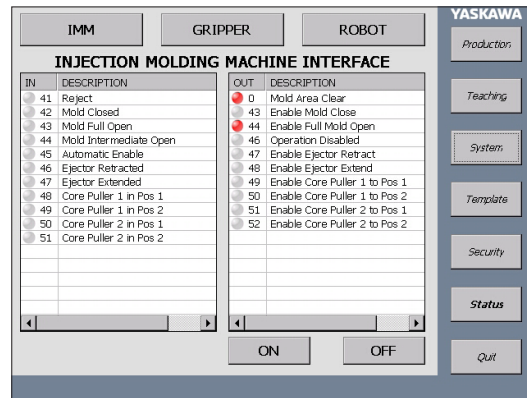
TEACH SCREEN - ROBOT ACTION LIST



PART STACKING CONFIGURATION



GRIPPER CONFIGURATION SCREEN



REAL TIME I/O MONITORING



motoman.com

Yaskawa America, Inc. | Motoman Robotics Division

100 Automation Way | Miamisburg, OH 45342

Tel: 937.847.6200 | Fax: 937.847.6277